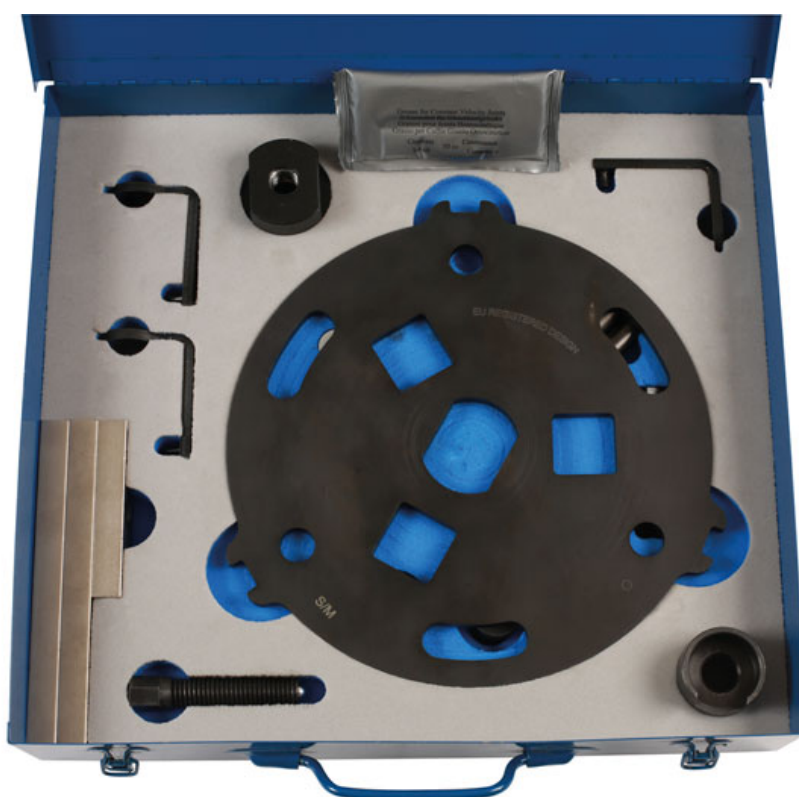


Dual Clutch Removal And Fitting Kit for Ford

Dual clutch removal and fitting kit for Ford DCT 250 gearbox. Use in conjunction with Laser 7821 when replacing the gearbox seals.



Additional Information

- Applications include: Ford Focus (from 2012), Fiesta (from 2008), B-Max (from 2012) and EcoSport (from 2013).
- Gear box applications include: DPCS6 and 6DCT250 6 speed dry plate dual clutch type gearbox.
- Equivalent to OEM 307-675.
- Made in Sheffield. Unique, simplified EU Registered design.
- For gearbox seal replacement kit, please see Laser Part No.7821.

<http://lasertools.co.uk/product/7727>

Video available: <https://youtu.be/PO2hl1-8-R4>

